

GEFF LVT + GREEN

ORCHID 3000

2024 - 2026



The First Premium Luxury Flooring

GEFF LVT ⁺GREEN

WHY GREEN?

**Sustainable material!
100% recyclable flooring!**

1

World's first sustainable flooring made of carbon-reducing material

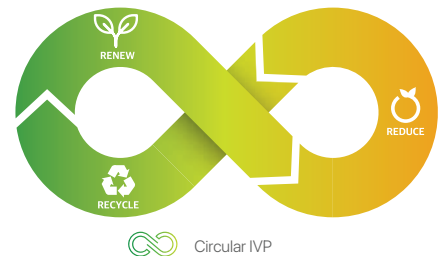


GEFF LVT ⁺GREEN is the most sustainable flooring, with over 90% of its raw materials converted into carbon-reducing materials.

Utilized Bio-Circular Balanced PVC, a sustainable raw material produced using discarded resources, such as cooking oil, and phthalate-free plasticizer made from PET bottles and achieved the ISCC PLUS, the world's most prestigious certification of sustainability.

2

Redefines sustainability standard of flooring



RENEW

Carbon-zero raw material



REDUCE

Waste zero



RECYCLE

100% Recyclable

1

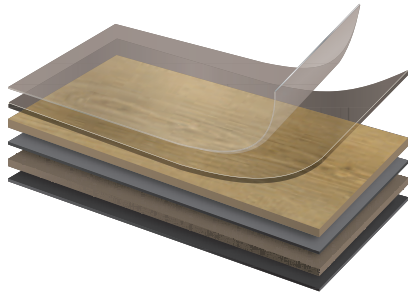
Why ORCHID 3000 is Different?

Durable and stable!



The 0.3 mm clear design protection layer with premium matte EPT™ Shield technology prevents scratches, dents, discoloration, and contamination that occur in residential and commercial areas for its best lifespan. The safety of antibacterial materials used for the EPT™ Shield technology has been approved by the U.S. Environmental Protection Agency (EPA)

EPT™ Shield & EMT™ Core Technology



Coating
Wear layer



EPT™ Shield

The coating layer with anti-mold technology. Highly resistant to discoloration and contamination, and easy to clean and maintain.

Printing Film
Mid layer
Core layer
Balance layer



EMT™ Core

Multi-layer structures, strong and durable with supreme dimensional stability to make the flooring last longer.

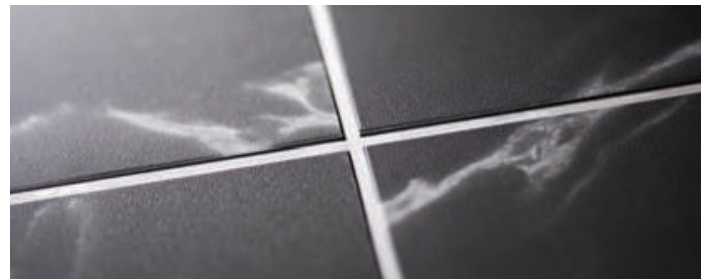
2



The first flooring applied
Rustic Edge



The first LVT applied
Built-In-Grout System



3

5 Years warranty, the commitment to the best quality!



Providing a 5 year warranty for the first time in the industry is our commitment to providing the best quality LVT with the easiest maintenance.

* Warranty conditions available upon request

4

Realistic texture and design



Embossed-In-Register for a hyper-realistic texture of nature



Stylish mix-and-matchable textures and designs with flexible cutting



More 600 x 600 tiles in a choice of trendy stone designs



The first big slab size LVT for wider and sensual space

Technical Specification

Thickness	Wear Layer	Size (mm)	Pcs/Box	m ² /BOX
3.0	0.30mm	186 x 940	18	3.15
		457.2 x 457.2	15	3.14
		457.2 x 914.4	8	3.34
		600 x 600	9	3.24
		180 x 1200	15	3.24
		914.4 x 914.4	6	5.02
		152.4 x 914.4	24	3.34
		609.6 x 609.6	9	3.34

	Standard	Orchid 3000
Level of use	EN 685	23 / 33
Dimensional stability	ISO 23999/ EN 434	≤0.10% (Norm: ≤0.25%)
Abrasion group	EN 660 - 2	Class T
Castor chair resistance	EN425	No damage
Squareness & straightness	ISO 24342	≤ 400:≤0.25 mm > 400:≤0.35 mm
	ASTM F2055	≤ 0.01 in
Residual indentation	EN 433	≤ 0.1 mm
	ASTM F1914	< 8%
Impact sound insulation	ISO 10140 - 3	6dB
Light fastness	ISO 10581	≥ 6
Slip resistance	EN 13893	DS
	DIN 51130	R10
Resistance to chemicals	ISO 26987	No Defects
	ASTM F925	No Defects
Thermal resistance	ISO 8302	0.01 m ² K/W
Curling after exposure to heat	ISO 23999	≤ 2 mm
Fire resistance	EN 13501	Bfl-s1
Flexibility	ISO 24344	Passed
	ASTM F137	Passed
Body voltage	EN 1815	<2kV
Resistance against staining	ISO 26987	Passed
Underfloor heating suitability	EN 12524	Suitable
Formaldehyde group	EN 717 - 1	E1
Indoor air quality		Low VOC

*Images and renderings in this sample book are for illustration purpose and may not represent the real colour.



STOCKING



Size 457.2 x 457.2 mm x 3T
Package 15pcs/Box (3.14m²)



NOW-3061 European Oak Parquet

Size 600 x 600 mm x 3T
Package 9pcs/Box (3.24m²)



NOT-3641 Sand Concrete

Size 914.4 x 914.4 mm x 3T
Package 6pcs/Box (5.02m²)



NOT-3994 Scratched Concrete

Size 457.2 x 914.4 mm x 3T
Package 8pcs/Box (3.34m²)



NOT-3493 Pulpis Marble



NOT-3494 Pulpis Marble

Size 186 x 940 mm x 3T
Package 18pcs/Box (3.15m²)



NOW-3063 Washed Oak

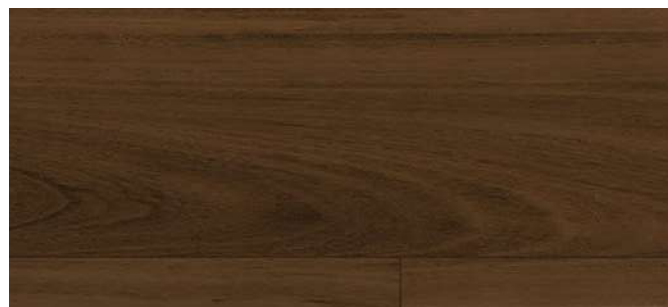


NOW-3003 Oak

Size 180 x 1200 mm x 3T
Package 15pcs/Box (3.24m²)



NOW-3065 Australian Wood

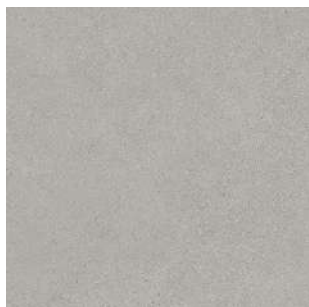


NOW-3066 Australian Wood

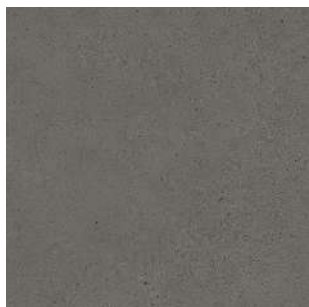
Square

Size 600 x 600 mm x 3T

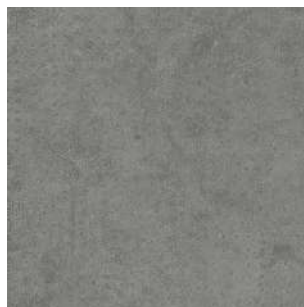
Package 9pcs/Box (3.24m²)



NOT-3640 Sand Concrete



NOT-3642 Sand Concrete



NOT-3643 Textured Concrete



NOT-3644 Textured Concrete



NOT-3634 Terrazzo



NOT-3629 Terrazzo



NOT-3630 Terrazzo



NOT-3631 Terrazzo



NOT-3635 Marble Stone



NOT-3636 Marble Stone



NOT-3637 Marble Stone



NOT-3638 Limestone



NOT-3631



NOT-3639 Limestone

Size 457.2 x 457.2 mm x 3T

Package 15pcs/Box (3.14m²)



NOT-3028 Smoke Concrete



NOT-3027 Smoke Concrete



NOT-3021 Micro Terrazzo



NOT-3022 Micro Terrazzo



NOT-3023 Micro Terrazzo



NOT-3041 Organic Fabric



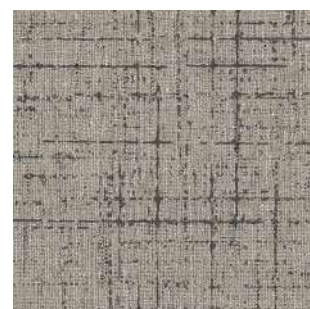
NOT-3034 Barco Stone



NOT-3035 Barco Stone



NOT-3039 Organic Fabric



NOT-3040 Line Fabric



NOT-3037 Aria Stone



NOT-3030 Himalayan Marble



NOT-3038 Himalayan Marble



NOT-3036 Bianco

Wood

Size 186 x 940 mm x 3T
Package 18pcs/Box (3.15m²)



NOW-3064 Washed Oak

Size 152.4 x 914.4 mm x 3T
Package 24pcs/Box (3.34m²)



NOW-3062 European Oak



NOW-3004 Walnut

Signature

Size 457.2 x 914.4 mm x 3T
Package 8pcs/Box (3.34m²)



NOT-3495 Italian Terrazzo

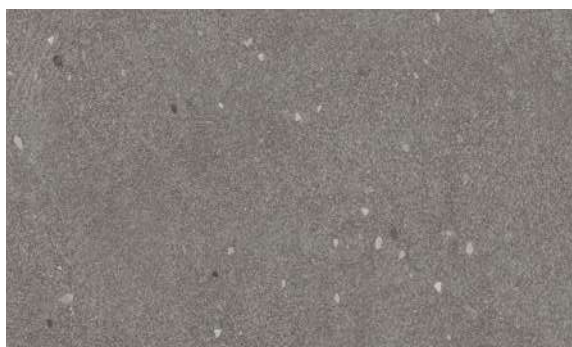
Size 914.4 x 914.4 mm x 3T
Package 6pcs/Box (5.02m²)



NOT-3993 Barro Terrazzo



NOT-3991 Barro Terrazzo



NOT-3491 Italian Terrazzo



NOT-3995 Scratched Concrete

Premium

Size 457.2 x 914.4 mm x 3T
Package 8pcs/Box (3.34m²)



NOT-3073

Natural Stone

Size 609.6 x 609.6 mm x 3T
Package 9pcs/Box (3.34m²)



NOT-3071

Natural Stone

The first LVT applied
 Built-In-Grout System



NOT-3072

Natural Stone

Size 457.2 x 457.2 mm x 3T
Package 16pcs/Box (3.34m²)



NOT-31001

Natural Pebbles



NOT-31002

Natural Pebbles



NOT-31003

Natural Pebbles

Embossed-In-Register for a
 hyper-realistic texture of nature



Size 152.4 x 914.4 mm x 3T
Package 24pcs/Box (3.34m²)



NOW-3051

Brushed Oak

The first flooring applied
 Rustic Edge



NOW-3052

Brushed Oak



Item Name NOW-3061
European Oak Parquet
Size 457.2 x 457.2 mm x 3T
Package (15pcs/Box) (3.14m²)



Item Name NOT-3641 Sand Concrete
Size 600 x 600 mm x 3T
Package (9pcs/Box) (3.24m²)



Item Name
Size
Package

NOT-3994 Scratched Concrete
914.4 x 914.4 mm x 3T
(6pcs/Box) (5.02m²)



Item Name NOT-3493 Pulpis Marble
Size 457.2 x 914.4 mm x 3T
Package (8pcs/Box) (3.34m²)



Item Name NOT-3494 Pulpis Marble
Size 457.2 x 914.4 mm x 3T
Package (8pcs/Box) (3.34m²)



Item Name NOW-3063 Washed Oak
Size 186 x 940 mm x 3T
Package (18pcs/Box) (3.15m²)

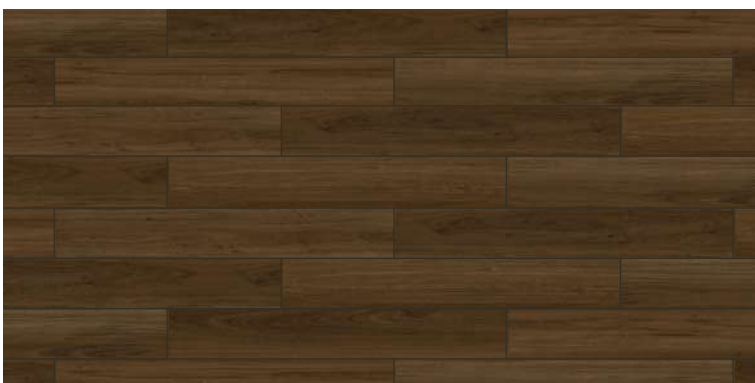


Item Name NOW-3003 Oak
Size 186 x 940 mm x 3T
Package (18pcs/Box) (3.15m²)



Item Name
Size
Package

NOW-3065 Australian Wood
180 x 1200 mm x 3T
(15pcs/Box) (3.24m²)



Item Name NOW-3066 Australian Wood
Size 180 x 1200 mm x 3T
Package (15pcs/Box) (3.24m²)



Stay Connected

www.goodrichglobal.com | info@goodrichglobal.com

 [/goodrich_global](https://www.instagram.com/goodrich_global)

 [/goodrichglobal](https://www.pinterest.com/goodrichglobal)

 [/Goodrich.Global.Singapore](https://www.facebook.com/Goodrich.Global.Singapore)

 [/Goodrich.Global](https://www.linkedin.com/company/Goodrich.Global)

 [/goodrichglobal](https://www.tiktok.com/@goodrichglobal)

 [/GoodrichGlobalOfficial](https://www.youtube.com/GoodrichGlobalOfficial)